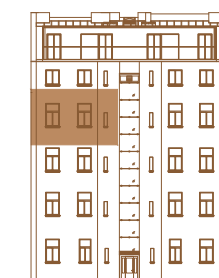
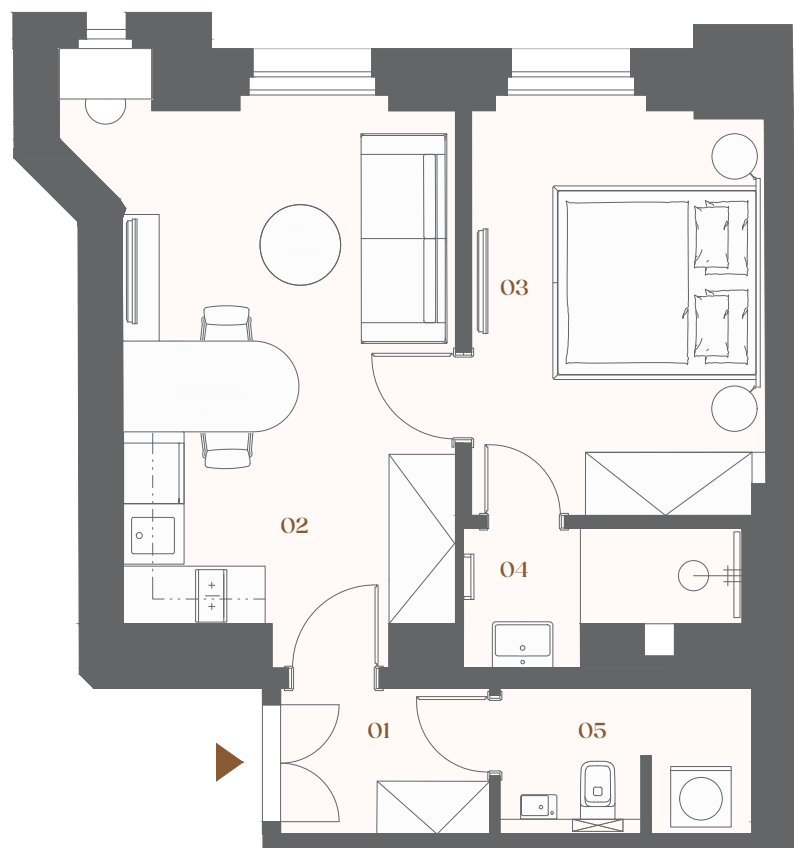
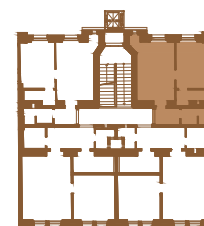


Bělehradská 29

Residential unit No. 41



courtyard elevation



Bělehradská street

F3 **2+kk** **46,1 m²**

Property ID	BEL41
Ownership	personal
Orientation	south
Condition at handover	renovated
Parking space	none

01	Hallway	3,3 m ²
02	Living + kitchenette	18,5 m ²
03	Bedroom	11,7 m ²
04	Bathroom	3,2 m ²
05	WC + storage	3,4 m ²

Vertical structures 3,6 m²

Floor area 43,7 m²

Cellar cubicle 2,4 m²

Overall area 46,1 m²



Note: The floor area of the unit is calculated according to the decree No. 366/2013 Sb. The areas of the individual rooms are approximate only. The layouts may visualize a possible future state, the exact specifications are defined in the contractual documentation. The depicted furnishings may not be included in the delivery. The developer reserves the right to make minor modifications. Any changes to the layout or materials comply with generally binding construction and legal regulations.