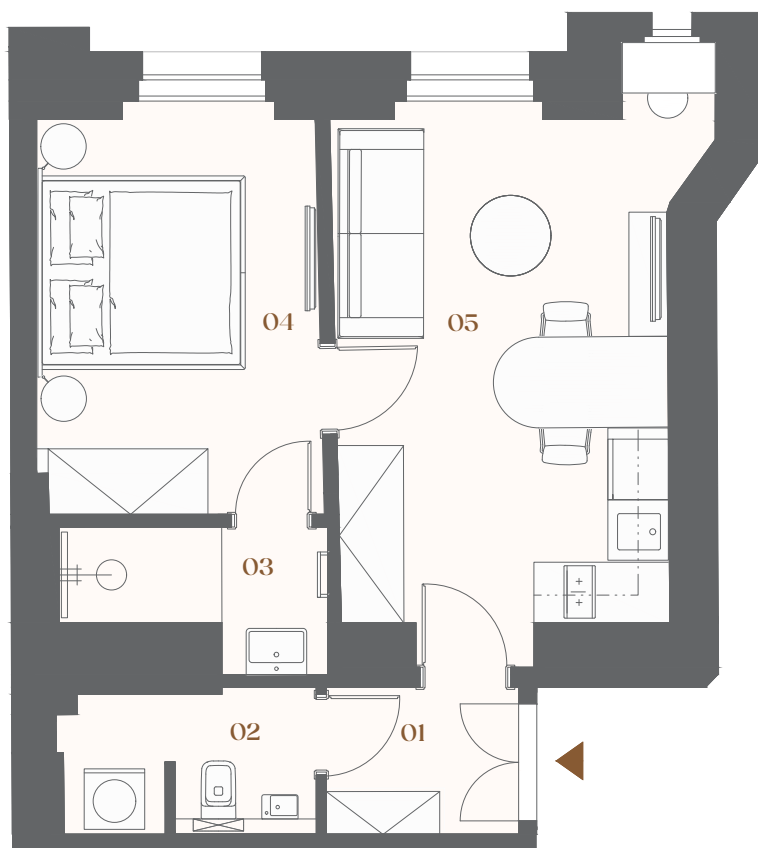


Bělehradská 29

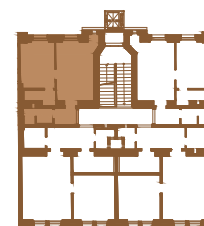
Residential unit No. 34

F2 **2+kk** **43,8 m²**

Property ID	BEL34
Ownership	personal
Orientation	south
Condition at handover	renovated
Parking space	none



courtyard elevation



Bělehradská street

01	Hallway	3,0 m ²
02	WC + storage	3,3 m ²
03	Bathroom	3,2 m ²
04	Bedroom	11,2 m ²
05	Living + kitchenette	18,2 m ²

Vertical structures 3,4 m²

Floor area 42,3 m²

Cellar cubicle 1,5 m²

Overall area 43,8 m²

Note: The floor area of the unit is calculated according to the decree No. 366/2013 Sb. The areas of the individual rooms are approximate only. The layouts may visualize a possible future state, the exact specifications are defined in the contractual documentation. The depicted furnishings may not be included in the delivery. The developer reserves the right to make minor modifications. Any changes to the layout or materials comply with generally binding construction and legal regulations.

