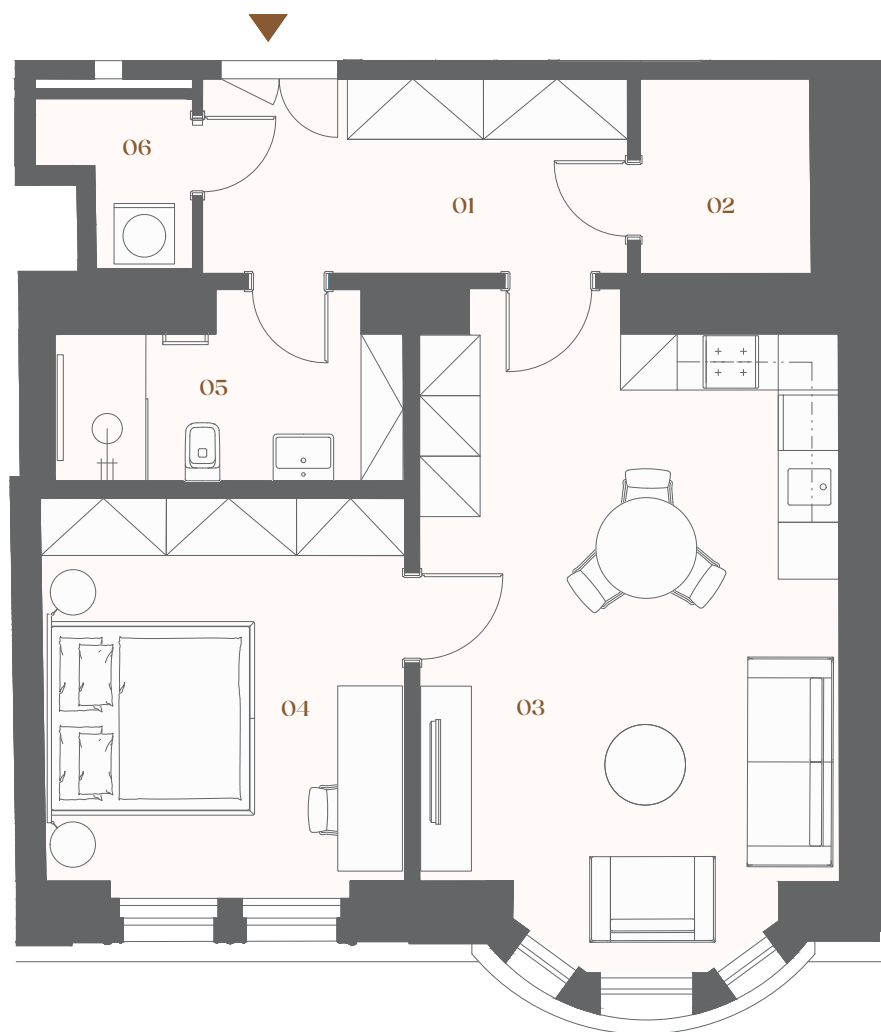
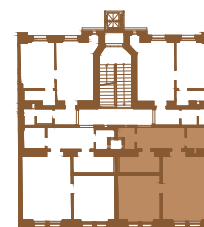


# Bělehradská 29

## Residential unit No. 32



street elevation



Bělehradská street

**F2** **2+kk** **66,2 m<sup>2</sup>**

|                       |           |
|-----------------------|-----------|
| Property ID           | BEL32     |
| Ownership             | personal  |
| Orientation           | north     |
| Condition at handover | renovated |
| Parking space         | none      |

|    |                      |                     |
|----|----------------------|---------------------|
| 01 | Hallway              | 8,4 m <sup>2</sup>  |
| 02 | Dressing room        | 3,3 m <sup>2</sup>  |
| 03 | Living + kitchenette | 25,3 m <sup>2</sup> |
| 04 | Bedroom              | 14,1 m <sup>2</sup> |
| 05 | Bathroom             | 5,7 m <sup>2</sup>  |
| 06 | Storage              | 2,1 m <sup>2</sup>  |

Vertical structures 4,9 m<sup>2</sup>

**Floor area** **63,8 m<sup>2</sup>**

Cellar cubicle 2,4 m<sup>2</sup>

**Overall area** **66,2 m<sup>2</sup>**

Note: The floor area of the unit is calculated according to the decree No. 366/2013 Sb. The areas of the individual rooms are approximate only. The layouts may visualize a possible future state, the exact specifications are defined in the contractual documentation. The depicted furnishings may not be included in the delivery. The developer reserves the right to make minor modifications. Any changes to the layout or materials comply with generally binding construction and legal regulations.

