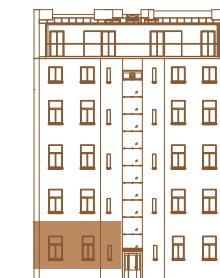
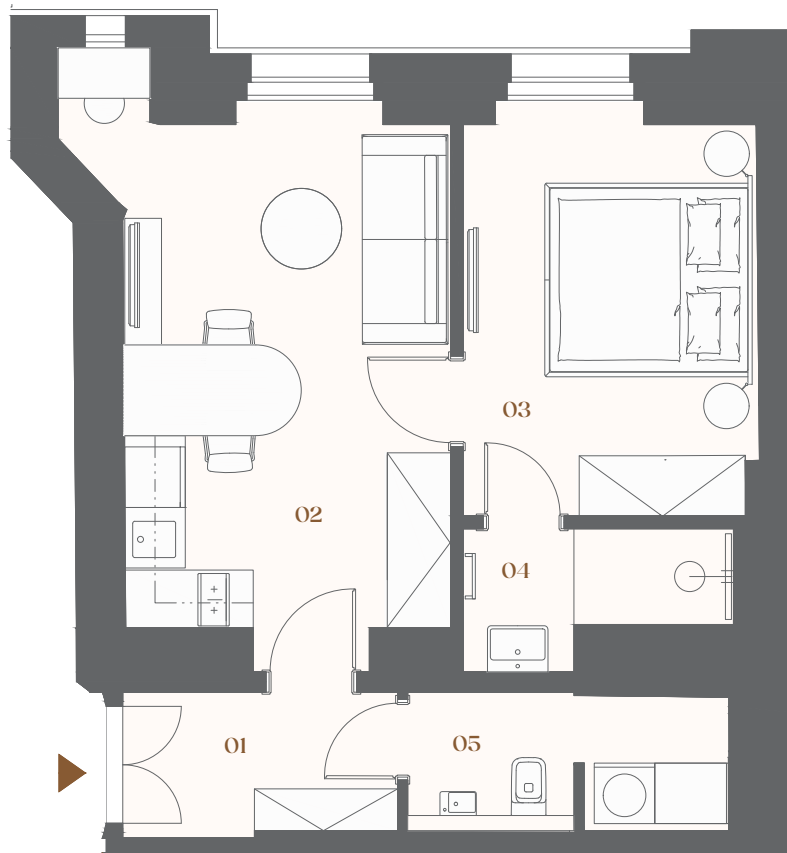


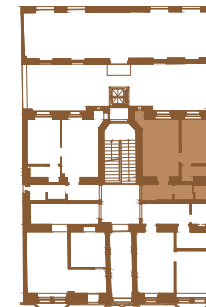
Bělehradská 29

Residential unit No. 11

GF	2+kk	47,2 m ²
Property ID	BEL11	
Ownership	personal	
Orientation	south	
Condition at handover	renovated	
Parking space	none	



courtyard elevation



Bělehradská street

01	Hallway	4,1 m ²
02	Living + kitchenette	18,0 m ²
03	Bedroom	11,7 m ²
04	Bathroom	3,2 m ²
05	WC + storage	4,0 m ²

Vertical structures	4,0 m ²
---------------------	--------------------

Floor area	45,0 m²
-------------------	---------------------------

Cellar cubicle	2,2 m ²
----------------	--------------------

Overall area	47,2 m²
---------------------	---------------------------



Note: The floor area of the unit is calculated according to the decree No. 366/2013 Sb. The areas of the individual rooms are approximate only. The layouts may visualize a possible future state, the exact specifications are defined in the contractual documentation. The depicted furnishings may not be included in the delivery. The developer reserves the right to make minor modifications. Any changes to the layout or materials comply with generally binding construction and legal regulations.