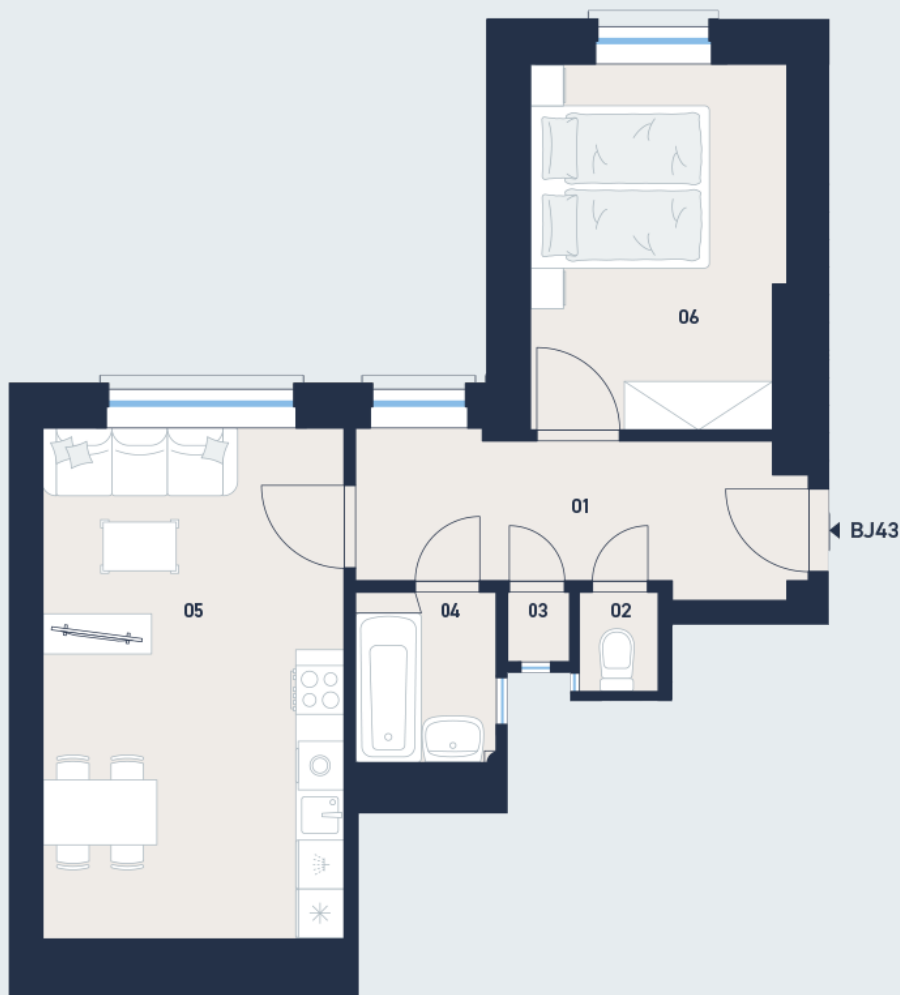


### Plan



### Situation in the building



### The situation on the floor



### Basic information

|                        |                         |
|------------------------|-------------------------|
| property ID            | MYS                     |
| Disposition            | two rooms + kitchenette |
| Floor                  |                         |
| Orientation            |                         |
| Status at the handover | For reconstruction      |

### Acreages

|                       |                     |
|-----------------------|---------------------|
| 01                    | 7.8 m <sup>2</sup>  |
| 02                    | 0.9 m <sup>2</sup>  |
| 03                    | 0.5 m <sup>2</sup>  |
| 04                    | 2.7 m <sup>2</sup>  |
| 05                    | 18.1 m <sup>2</sup> |
| 06                    | 10.8 m <sup>2</sup> |
| Vertical construction | 2.6 m <sup>2</sup>  |
| Floor area            | 43.4 m <sup>2</sup> |
| Cellar stall          | 6.7 m <sup>2</sup>  |
| Overall area          | 50.1 m <sup>2</sup> |



Note: The floor area of the unit is calculated according to Decree No. 366/2013 Coll., as amended. The areas of individual rooms are indicative only. Layouts can visualize a possible future state, the exact parameters are specified in the relevant contract documentation. The equipment shown may not be part of the delivery. The developer reserves the right to make minor adjustments. Any change in layout or materials is subject to compliance with generally binding construction and legal regulations.