



BYDLENÍ
HANUSOVA

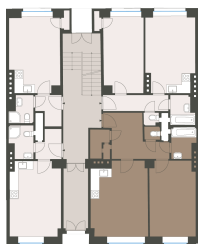
WWW.BYDLENIHANUSOVA.CZ

Housing unit
no.12

POSITION WITHIN
THE BUILDING

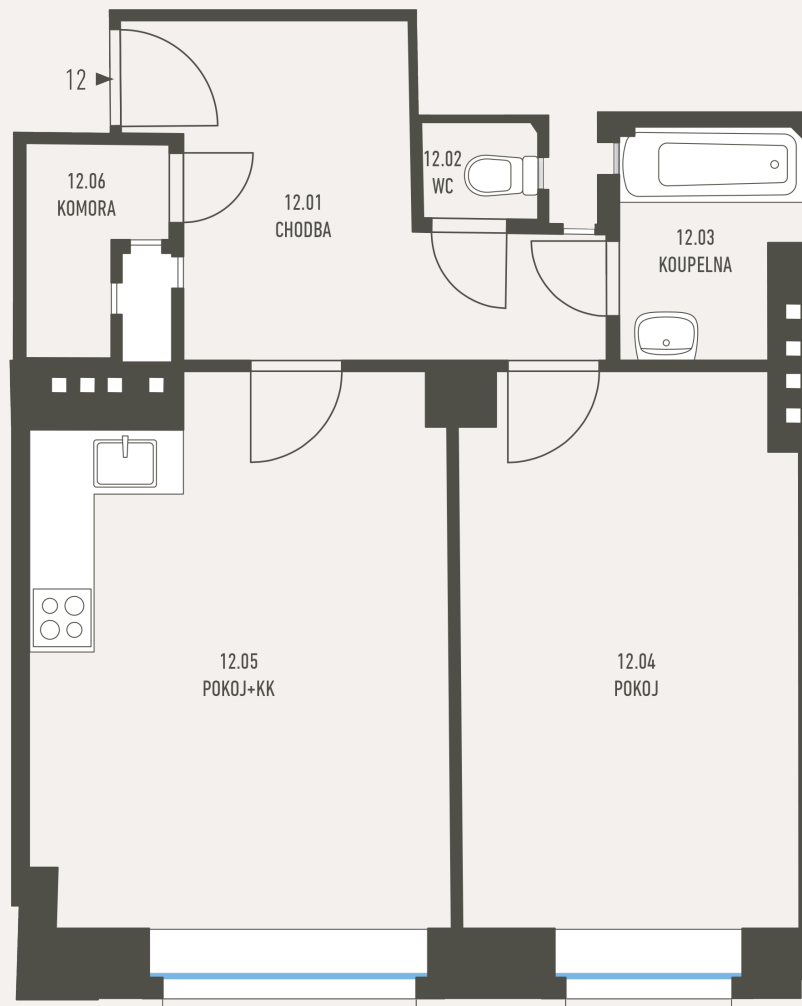


POSITION WITHIN FLOOR



by **PSN**

UNIT PLAN



BASIC INFORMATION

property ID	HAN12
Ownership	personal
Disposition	two rooms + kitchenette
Floor	1
Orientation	S
Status at the handover	For reconstruction

ACREAGES

12.01 Corridor	9.5 m ²
12.02 Toilet	1 m ²
12.03 Bathroom	3.4 m ²
12.04 Room	16 m ²
12.05 Room+kitchenette	19.3 m ²
12.06 Pantry	2.1 m ²
Vertical construction	3.6 m ²
Floor area	54.9 m²
Cellar stall	2.3 m ²
Overall area	56.9 m²

Note: The floor area of the unit is calculated according to Decree No. 366/2013 Coll., as amended. The areas of individual rooms are indicative only. Layouts can visualize a possible future state, the exact parameters are specified in the relevant contract documentation. The equipment shown may not be part of the delivery. The developer reserves the right to make minor adjustments. Any change in layout or materials is subject to compliance with generally binding construction and legal regulations.

