

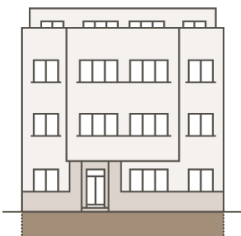


BYDLENÍ  
**HANUSOVA**

WWW.BYDLENIHANUSOVA.CZ

Half-built non-  
residential unit  
with a front  
garden  
no.2

POSITION WITHIN  
THE BUILDING

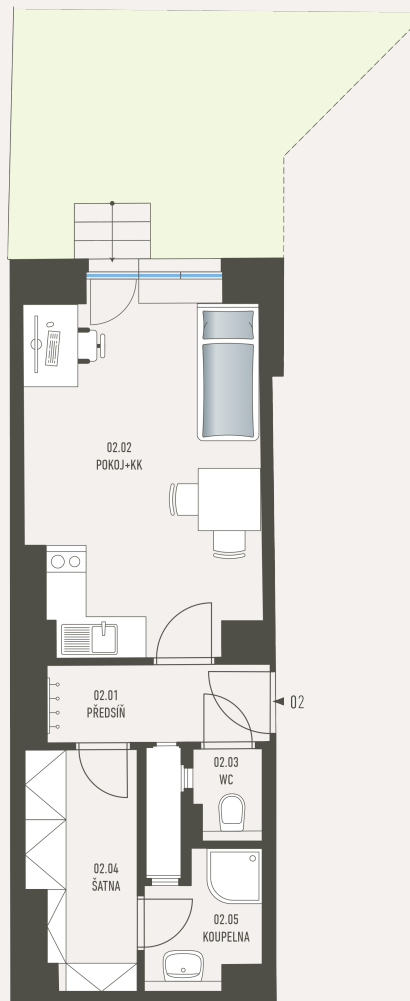


POSITION WITHIN FLOOR



by **PSN**

## UNIT PLAN



## BASIC INFORMATION

property ID	HAN2
Ownership	personal
Disposition	one room + kitchenette
Floor	-1
Orientation	N
Status at the handover	Původní - před rekonstrukcí

## ACREAGES

2.01 Hall	3.6 m <sup>2</sup>
2.02 Room+kitchenette	17.2 m <sup>2</sup>
2.03 Toilet	1.1 m <sup>2</sup>
2.04	5.2 m <sup>2</sup>
2.05 Bathroom	2.8 m <sup>2</sup>
Vertical construction	2.0 m <sup>2</sup>
<b>Floor area</b>	<b>31.9 m<sup>2</sup></b>
Cellar stall	2 m <sup>2</sup>
Front garden	16.6 m <sup>2</sup>
<b>Overall area</b>	<b>50.5 m<sup>2</sup></b>

Note: The floor area of the unit is calculated according to Decree No. 366/2013 Coll., as amended. The areas of individual rooms are indicative only. Layouts can visualize a possible future state, the exact parameters are specified in the relevant contract documentation! The equipment shown may not be part of the delivery. The developer reserves the right to make minor adjustments. Any change in layout or materials is subject to compliance with generally binding construction and legal regulations.

