

## Half-built residential unit no.11

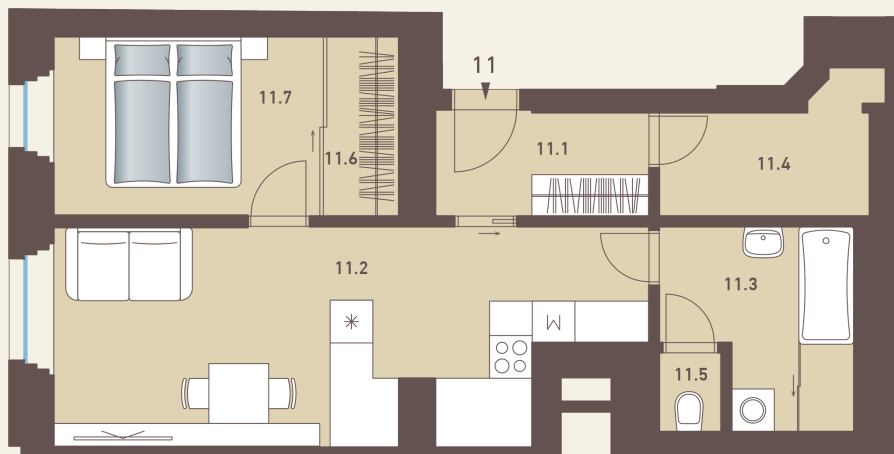
### POSITION WITHIN THE BUILDING



### POSITION WITHIN FLOOR



### UNIT PLAN



### BASIC INFORMATION

property ID	PET11
Ownership	personal
Disposition	two rooms + kitchenette
Floor	1
Orientation	
Lift	No
Status at the handover	Shell&Core

### ACREAGES

11.1 Corridor	4.9 m²
11.2 Room+kitchenette	24.7 m²
11.3 Bathroom	7.1 m²
11.4	5.2 m²
11.5 Toilet	1.1 m²
11.6	3 m²
11.7	10.2 m²
<b>Floor area</b>	<b>61.1 m²</b>
Cellar stall	1.9 m²
<b>Overall area</b>	<b>63 m²</b>

**This is the proposed status.**

Note: The unit's floor area is calculated in accordance with Regulation No. 366/2013 Coll., as amended. The floor plan may not correspond to the condition of the unit when handed over. Areas of individual rooms are for reference only. The equipment shown in the plans is not included. The exact parameters are specified in the contractual documents. The developer reserves the right to make minor modifications. Any change in the layout or materials is subject to compliance with generally binding building and legal regulations.

