

Non-residential unit no.23

POSITION WITHIN THE BUILDING

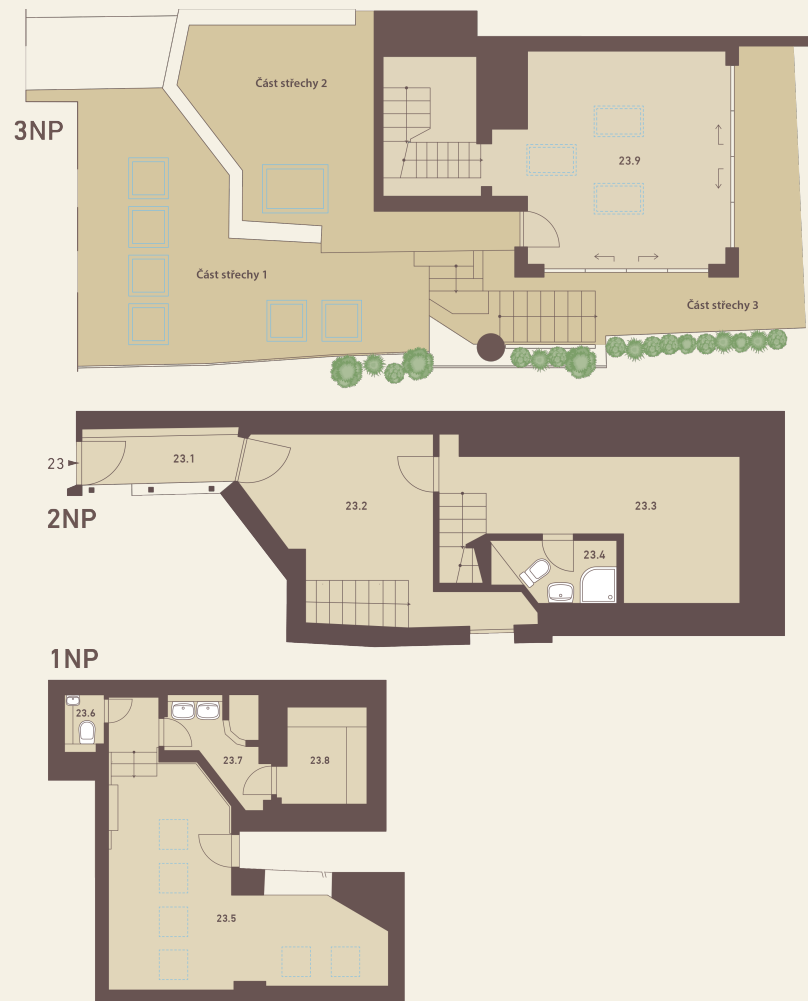


POSITION WITHIN FLOOR



by

UNIT PLAN



The unit is spread over 3 floors.

Note: The unit's floor area is calculated in accordance with Regulation No. 366/2013 Coll., as amended. The floor plan may not correspond to the condition of the unit when handed over. Areas of individual rooms are for reference only. The equipment shown in the plans is not included. The exact parameters are specified in the contractual documents. The developer reserves the right to make minor modifications. Any change in the layout or materials is subject to compliance with generally binding building and legal regulations.

BASIC INFORMATION

property ID	PET23
Ownership	personal
Layout	
Floor	1,2,3
Orientation	
Status at the handover	SHELL&CORE

ACREAGES

23.1 Commercial space	4.5 m ²
23.2 Commercial space	16.9 m ²
23.3 Commercial space	14.8 m ²
23.4 Bathroom	3.3 m ²
23.5 Rest room	27.7 m ²
23.6 Toilet	1.5 m ²
23.7 Bathroom	4.8 m ²
23.8 Non-residential space	5.2 m ²
23.9 Commercial space	28 m ²
23.10 Part of the roof 1	30.9 m ²
23.11 Part of the roof 2	19.6 m ²
23.12 Part of the roof 3	9.7 m ²
Floor area	113.8 m²
Overall area	174 m²

