



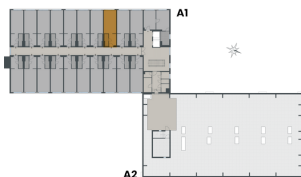
SKYLINECHODOV.CZ

Non-residential unit no.818

POSITION WITHIN THE BUILDING

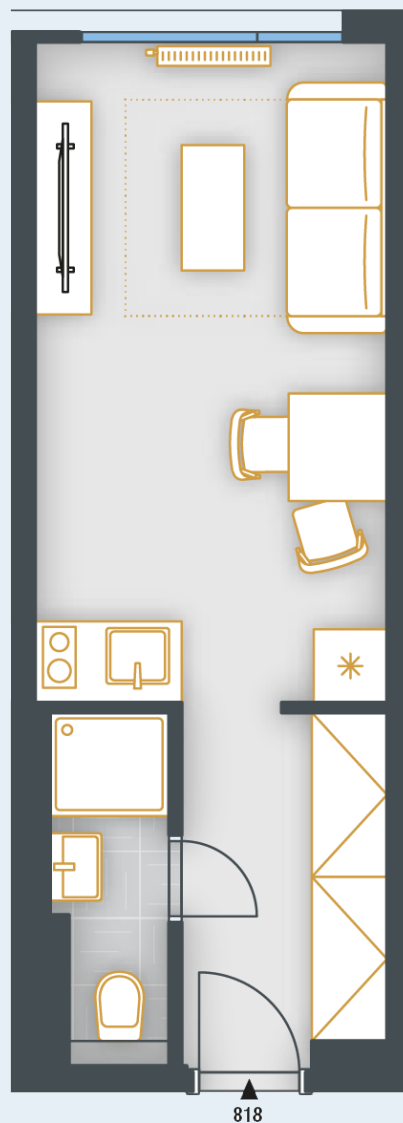


POSITION WITHIN FLOOR



by
PSN

UNIT PLAN



BASIC INFORMATION

property ID	SKY818
Disposition	one room + kitchenette
Floor	8
Orientation	
Lift	Yes
Type of building	Concrete
Status at the handover	Fit out
Parking	No

ACREAGES

Hall	4.7 m ²
Bathroom	2.6 m ²
Room	14.9 m ²
Vertical construction	0.4 m ²
Floor area	22.6 m²
Cellar stall	1.1 m ²
Overall area	23.7 m²

Note: The unit's floor area is calculated in accordance with Regulation No. 366/2013 Coll., as amended. Areas of individual rooms are for information only. The equipment shown in the plans (furniture, kitchen unit, electrical appliances, luminaires, etc.) are not included. The exact parameters are specified in the contractual documents. The developer reserves the right to make minor modifications. Any change in the layout or materials is subject to compliance with generally binding building and legal regulations.

The unit is finished up to the final surfaces, including sanitary ware, and contains the preparatory points for the kitchen installations.

