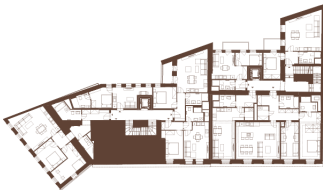


Residential  
unit  
no.232

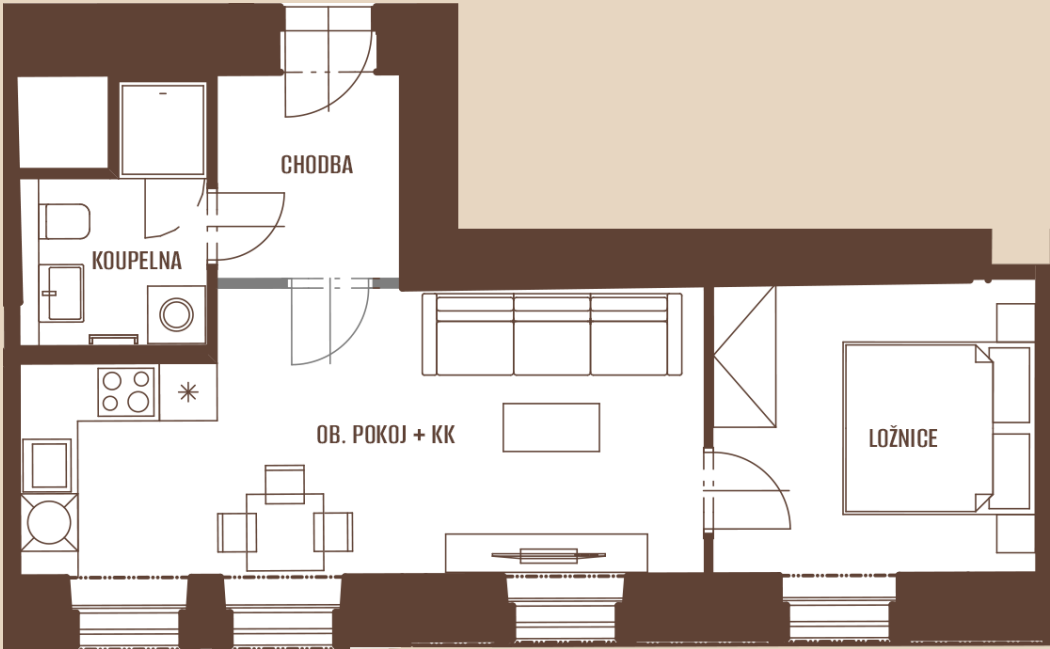
POSITION WITHIN  
THE BUILDING



POSITION WITHIN FLOOR



UNIT PLAN



BASIC INFORMATION

|                        |                         |
|------------------------|-------------------------|
| property ID            | NRU232                  |
| Disposition            | two rooms + kitchenette |
| Floor                  | 3                       |
| Orientation            | N                       |
| Lift                   | Content.yes             |
| Type of building       | Brick                   |
| Status at the handover | Fit out                 |

ACREAGES

|                     |                           |
|---------------------|---------------------------|
| Chodba              | 4.6 m <sup>2</sup>        |
| Koupelna            | 4.4 m <sup>2</sup>        |
| Ob. pokoj + kk      | 21.2 m <sup>2</sup>       |
| Ložnice             | 10.6 m <sup>2</sup>       |
| Svislé konstrukce   | 0.9 m <sup>2</sup>        |
| <b>Floor area</b>   | <b>41.7 m<sup>2</sup></b> |
| <b>Overall area</b> | <b>41.7 m<sup>2</sup></b> |

Note: Areas of individual rooms are for reference only. The equipment shown in the plans (furniture, kitchen unit, electrical appliances, lights, etc.) is not included. The exact parameters are specified in the contractual documents. The developer reserves the right to make minor modifications. Any change in the layout or materials is subject to compliance with generally binding building and legal regulations.

The residential unit is only finished up to the final surfaces, including sanitaryware, and contains the preparatory points for the kitchen installations.