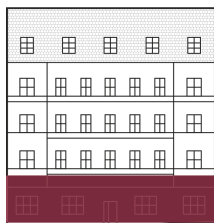
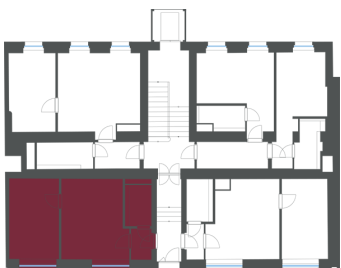


Accommodation unit no.12

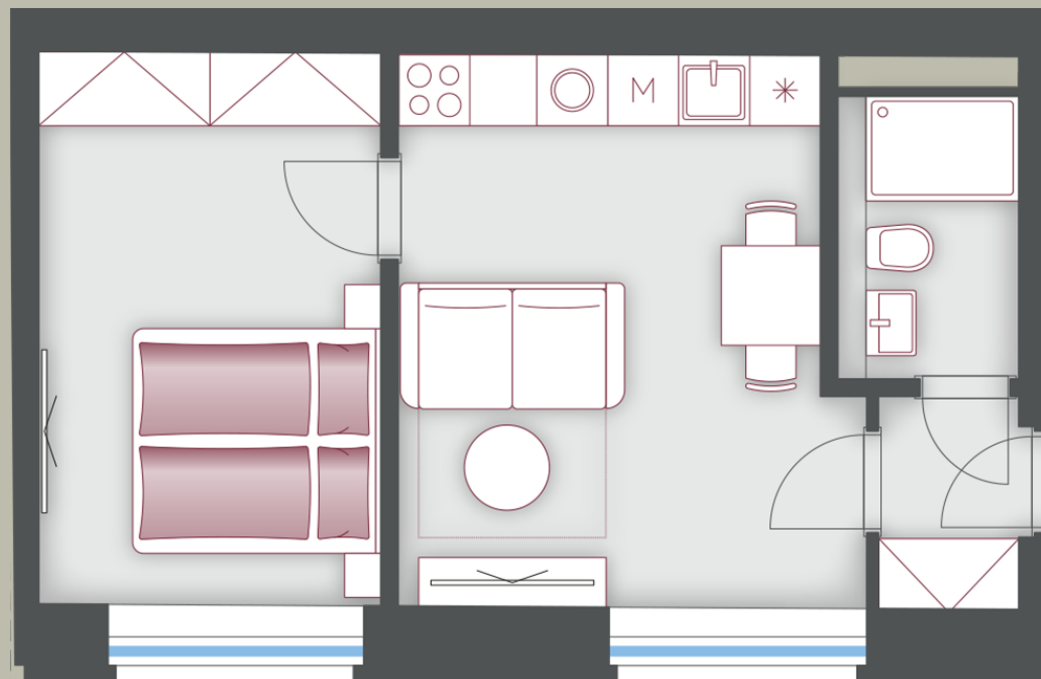
POSITION WITHIN THE BUILDING



POSITION WITHIN FLOOR



UNIT PLAN



BASIC INFORMATION

property ID	ST12
Layout	two rooms + kitchenette
Floor	1/5
Orientation	
Lift	Yes
Type of building	Brick
Status at the handover	White wall

ACREAGES

Vestibule / corridor	2.6 m ²
Bathroom	3.5 m ²
Living room + kitchen	19.1 m ²
Bedroom	14.7 m ²
Vertical construction	1.8 m ²
Floor area	41.7 m²
Cellar stall	1.7 m ²
Overall area	43.4 m²

Note: Areas of individual rooms are for reference only. The equipment shown in the plans (furniture, kitchen unit, electrical appliances, lights, etc.) are not included. The partition between the non-standard bedroom and the living room is not included in the scope of delivery. The exact parameters are specified in the contractual documentation. The developer reserves the right to make minor modifications. Any change in the layout or materials is subject to compliance with generally binding building and legal regulations.

The residential unit is finished up to the White Wall standard. Only 5 steps separate you from your dream home (laying the floor, gluing ceramic tiles, installing a kitchen unit, attaching sanitary ware, hanging lighting).