



BYDLENÍ
NA VÝŠINÁCH

BYDLENINAVYSINACH.CZ

Residential
unit
no.51

POSITION WITHIN
THE BUILDING

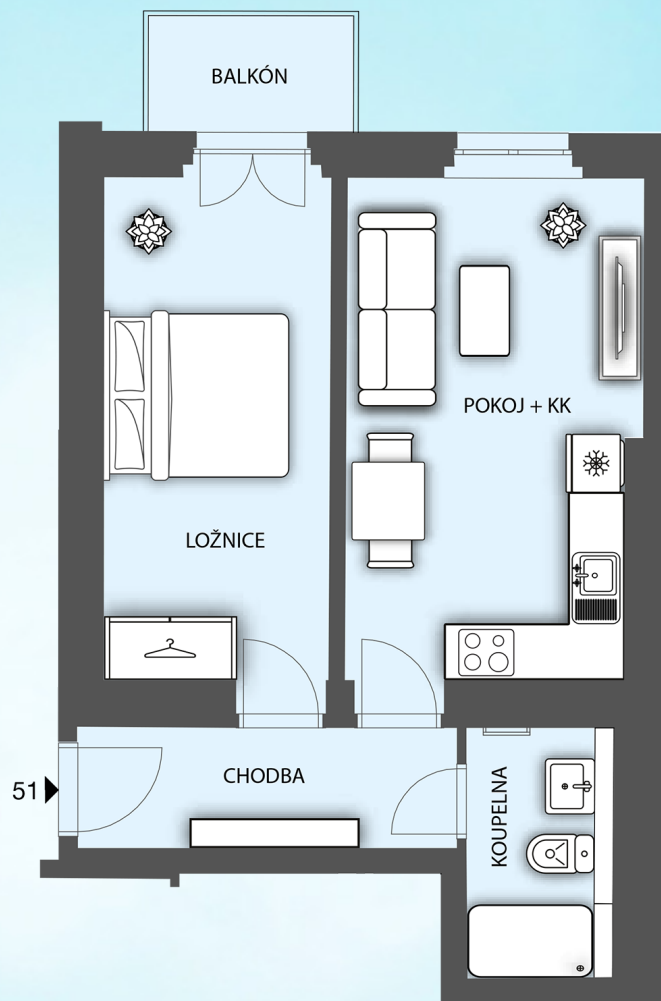


POSITION WITHIN FLOOR



by
PSN

UNIT PLAN



BASIC INFORMATION

| | |
|------------------------|-------------------------|
| property ID | NAV51 |
| Disposition | two rooms + kitchenette |
| Floor | 5 |
| Orientation | |
| Type of building | Brick |
| Status at the handover | Fit out |

ACREAGES

| | |
|-----------------------|---------------------------|
| Hall | 5.9 m ² |
| Bathroom | 3.7 m ² |
| Obývací pokoj+kk | 16.5 m ² |
| Room | 14.3 m ² |
| Vertical construction | 3.2 m ² |
| Floor area | 43.6 m² |
| Balcony | 3 m ² |
| Cellar stall | 1.2 m ² |
| Overall area | 47.8 m² |

The residential unit is only finished up to the final surfaces, including sanitary ware, and contains the preparatory points for the kitchen installations.

The residential unit is only finished up to the final surfaces, including sanitary ware, and contains the preparatory points for the kitchen installations.