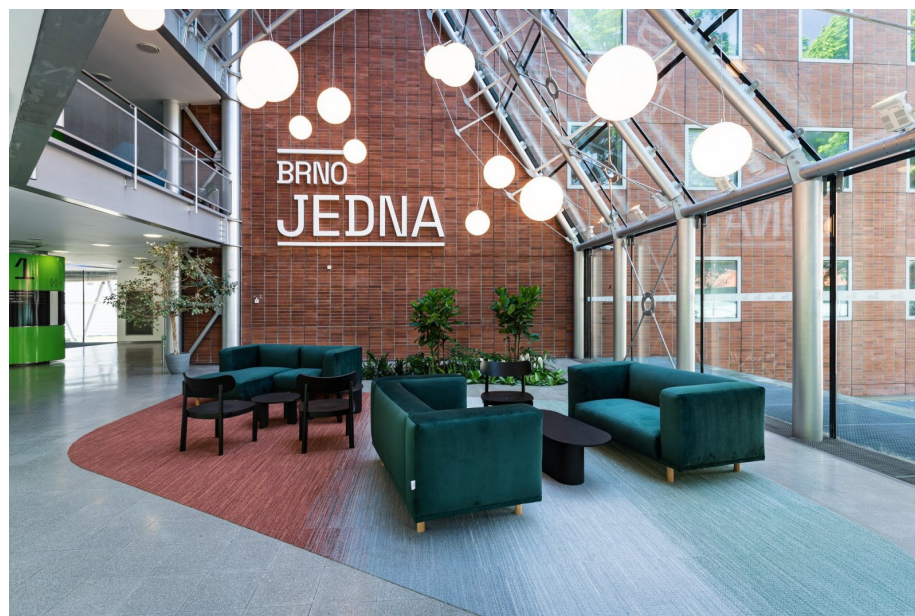
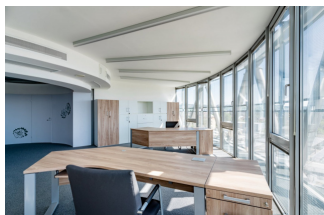


Rental of commercial properties | Property ID BPL710 | 710 m<sup>2</sup>,

## Offices with parking

**106 500 CZK**



Your notes:

Ownership	personal
Disposition	kanceláře
Overall area	710 m <sup>2</sup>
Floor area	710 m <sup>2</sup>
Services	90 CZK/m <sup>2</sup>
floor	5 / 8
Lift	yes
Type of building	skeletal structure
State of building	very good
Unit state	Original - liveable
Furnishings	yes
Parking	yes